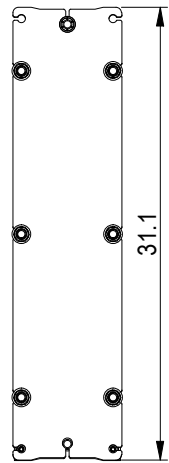
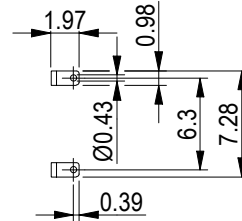
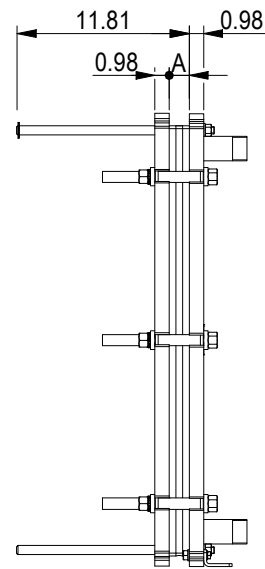


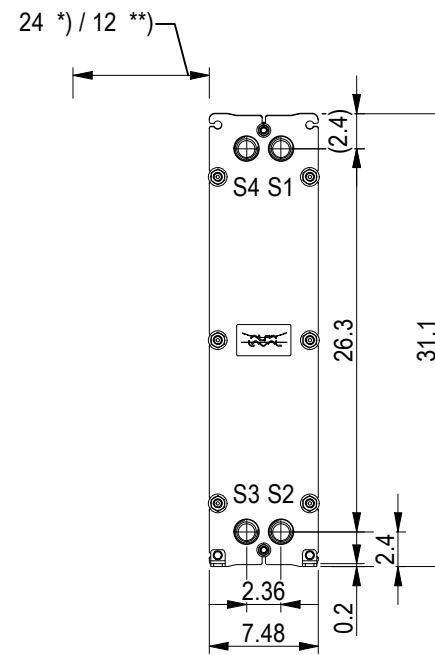
**PRESSURE PLATE**  
(MOVABLE)



Space between pressure plate and supporting column should be kept free from fixed installations!



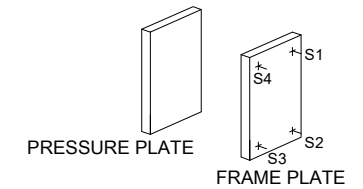
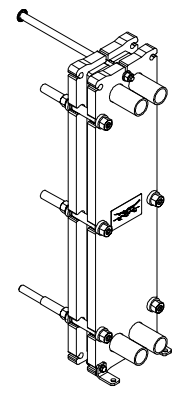
**FRAME PLATE**



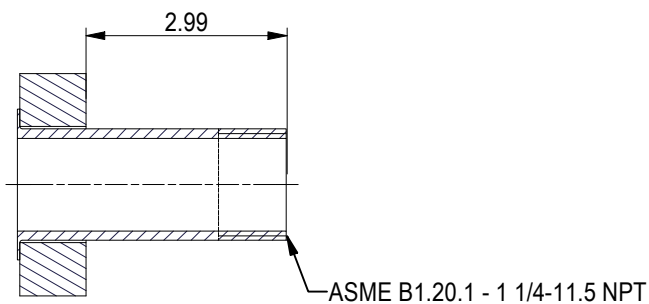
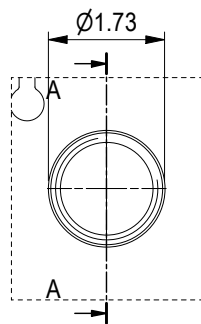
\*) Recommended free space for opening and closing to be applied on both sides

\*\*) Free space can be reduced to this distance on one of the sides

All dimensions in inches



ASME B1.20.1 - 1 1/4-11.5 NPT, ALLOY 316, 101 mm  
S1, S2, S3, S4 A-A:



APPROX. OUTER DIMENSIONS	
LENGTH	12.2 in
WIDTH	7.9 in
HEIGHT	31.5 in
APPROX. WEIGHTS	
NET WEIGHT, EMPTY	149 lb
WEIGHT FULL OF WATER	156 lb
PLATE MATERIAL	ALLOY 316
PLATE THICKNESS	0.5 mm
GASKET	NBRP Clip-on

CHANNEL ARRANGEMENT 1\*12 ML / 1\*12 MH

NO. OF UNITS 1

null GPM  
null GPM



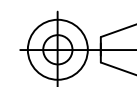
www.alfalaval.com

DRAWING  
GASKETED PLATE HEAT EXCHANGER

**TL3-BFG**

ASME  
Code Section VIII Div.1

MAWP 145 psi at 150.1 °F  
MDMT 32.0 °F at 145 psi  
Designed and constructed in accordance with the 2019 ASME Code.



8240171412  
TL3-BFG, 25 plates

Do not use this drawing for foundation bolting or piping layout

DATE 6/1/22  
REVISION 0